

# RESEARCH CENTRES





### Research Institute for Renewable Energy

Director: prof. Viorel UNGUREANU  
Contact: viorel.ungureanu@upt.ro, <http://www.icer.ro/>



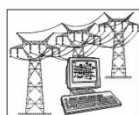
### Research Centre for Computers and Information Technology

Director: prof. Vladimir-Ioan CREȚU  
Contact: vladimir.cretu@upt.ro, <http://cercetare.cs.upt.ro/>



### Research Centre for Automatic Systems Engineering

Director: prof. Radu-Emil PRECUP  
Contact: radu.precup@upt.ro, <http://www.aut.upt.ro/centru-cercetare/>



### Research Centre for Power Systems Analysis and Optimization

Director: prof. Ștefan KILYENI  
Contact: stefan.kilyeni@upt.ro, <http://www.et.upt.ro/index.php?sublink=1694&link=10&pag=2&lang=ro>



### Research Centre for Smart Energy Conversion and Storage

Director: prof. Nicolae MUNTEAN  
Contact: nicolae.muntean@upt.ro,  
<http://www.et.upt.ro/index.php?link=10&sublink=1695&pag=1&lang=en>



### Research Centre for Intelligent Electronic Systems

Director: prof. Marius OTEȘTEANU  
Contact: marius.otesteanu@upt.ro, <http://ccesi.upt.ro/>



### Research Centre for Intelligent Signal Processing

Director: prof. Alexandru ISAR  
Contact: alexandru.isar@upt.ro, <http://www.tc.etc.upt.ro/ispr/>



### Research Centre for Multimedia

Director: prof. Radu VASIU  
Contact: radu.vasiu@upt.ro, <http://www.cm.upt.ro>



### Research Centre for Environmental Science and Engineering

Director: prof. Rodica PODE  
Contact: rodica.pode@upt.ro, <http://www.chim.upt.ro/ro/cercetare/centru-cercetare/centru-de-cercetare-in-stiinta-si-ingineria-mediului>



## Research Centre for Inorganic Materials and Alternative Energies

Director: prof. Ioan LAZĂU

Contact: [ioan.lazau@upt.ro](mailto:ioan.lazau@upt.ro), <http://www.chim.upt.ro/ro/cercetare/centre-cercetare/centru-de-cercetare-pentru-materiale-anorganice-si-energii-alternative>



## Research Centre for Organic, Macromolecular and Natural Compounds' Chemistry and Engineering

Director: prof. Corneliu DAVIDESCU

Contact: [corneliu.davidescu@upt.ro](mailto:corneliu.davidescu@upt.ro), <http://www.chim.upt.ro/ro/cercetare/centre-cercetare/centru-de-cercetare-in-chimia-si-ingineria-compusilor-organici-macromoleculari-si-naturali>



## Research Centre for Mechanics of Materials and Structural Safety

Director: prof. Dan DUBINĂ

Contact: [dan.dubina@upt.ro](mailto:dan.dubina@upt.ro), <http://www.ct.upt.ro/centre/cemsig/>



## Research Centre for Hidrotechnical Engineering and Environmental Protection

Director: prof. Constantin FLORESCU

Contact: [constantin.florescu@upt.ro](mailto:constantin.florescu@upt.ro), <http://www.ct.upt.ro/centre/cchpm/index.htm>



## Research Centre for Building Services

Director: s.l. Călin SEBARCHIEVICI

Contact: [calin.sebarchievici@upt.ro](mailto:calin.sebarchievici@upt.ro), <http://www.ct.upt.ro/centre/ccic/>



## Research Centre for Retrofitting of Constructions

Director: prof. Tamas NAGY GYORGY

Contact: [tamas.nagy-gyorgy@upt.ro](mailto:tamas.nagy-gyorgy@upt.ro), <http://www.ct.upt.ro/centre/reco/>



## Research Centre for Construction and Transportation Substructures

Director: prof. Liviu Adrian CIUTINĂ

Contact: [adrian.ciutina@upt.ro](mailto:adrian.ciutina@upt.ro), <http://www.ct.upt.ro/centre/ict/>



## Research Centre for Mechatronics and Robotics

Director: prof. Inocențiu MANIU

Contact: [inocentiu.maniu@upt.ro](mailto:inocentiu.maniu@upt.ro), <http://mctr.mec.upt.ro/activitate-de-cercetare>



### Research Centre for Medical Engineering

Director: prof. Liviu MARȘAVINA  
Contact: [liviu.marsavina@upt.ro](mailto:liviu.marsavina@upt.ro), <https://ccim.upt.ro/>



### Research Centre for Integrated Engineering

Director: prof. George DRĂGHICI  
Contact: [george.draghici@upt.ro](mailto:george.draghici@upt.ro), <http://imf.upt.ro/CCII/index.html>



### Research Centre for Processing and Characterization of Advanced Materials

Director: conf. Bogdan RADU  
Contact: [bogdan.radu@upt.ro](mailto:bogdan.radu@upt.ro), <https://sites.google.com/view/ccpcma/home>



### Research Centre for Complex Fluid Systems Engineering

Director: prof. Romeo SUSAN-RESIGA  
Contact: [romeo.resiga@upt.ro](mailto:romeo.resiga@upt.ro), <https://mh.mec.upt.ro/>



### Research Centre for Thermal Machines and Equipments, Transportation and Environmental Pollution Control

Director: prof. Ioana IONEL  
Contact: [ioana.ionel@upt.ro](mailto:ioana.ionel@upt.ro), <http://mettcp.mec.upt.ro/>



### Research Centre for Engineering and Management

Director: prof. Claudiu Tiberiu ALBULESCU  
Contact: [claudiu.albulescu@upt.ro](mailto:claudiu.albulescu@upt.ro), <http://www.mpt.upt.ro/pag/centru%20cercetare.html>



### Research Center in Urban Planning and Architecture

Director: prof. Smaranda BICA  
Contact: [smaranda.bica@upt.ro](mailto:smaranda.bica@upt.ro), [http://www.arh.upt.ro/?page\\_id=3546](http://www.arh.upt.ro/?page_id=3546)



### Research Centre for Advanced Study Methods for Physical Phenomena

Director: prof. Dumitru TOADER  
Contact: [dumitru.toader@upt.ro](mailto:dumitru.toader@upt.ro), <http://www.et.upt.ro/ro/departaments/bazele-fizice-ale-ingineriei>



### Research Center for Materials and Industrial Technologies

Director: prof. Teodor HEPUȚ  
Contact: [teodor.heput@upt.ro](mailto:teodor.heput@upt.ro), <http://www.fih.upt.ro/ccmti/>

